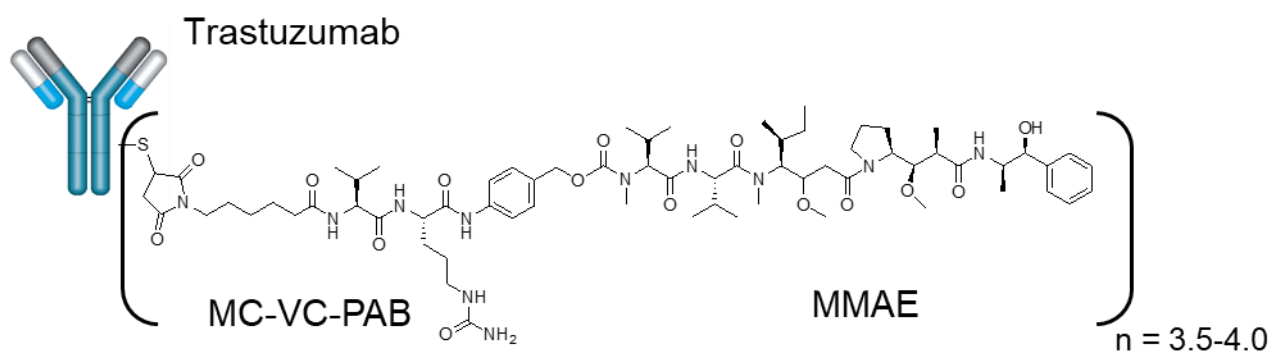


Catalog# BP-50167

## Trastuzumab-MMAE

### Description:

Trastuzumab-MMAE is an antibody-drug conjugate (ADC) of Anti-Her2 human monoclonal antibody Trastuzumab with MMAE (Monomethyl auristatin E) through a cathepsin cleavable peptide linker (MC-VC-PAB). MMAE is a synthetic antineoplastic agent. It is also a microtubule-disrupting agent. The DAR of Trastuzumab-MMAE is  $n = 3.5 - 4.0$ . This product is used for research only. It can be used as a reference compound. The Trastuzumab-MMAE has the following chemical structure:



<b>Product Details</b>	
Species Reactivity	Human
Published Species	Human
Host/Isotype	Cell culture/ IgG1
Class	Monoclonal
Type	Antibody-drug conjugate
Clone	Trastuzumab biosimilar
Conjugate	Trastuzumab conjugated with MC-VC-PAB-MMAE
DAR	3.5 - 4.0
Immunogen	Human Her2
Form	Liquid
Concentration	1 mg/ml
Purification	Size exclusive column
Storage buffer	50 mM Sodium Phosphate, 0.05% Tween-20, pH7.4
Storage conditions	4°C for short time, -20°C or -80°C for long time.